

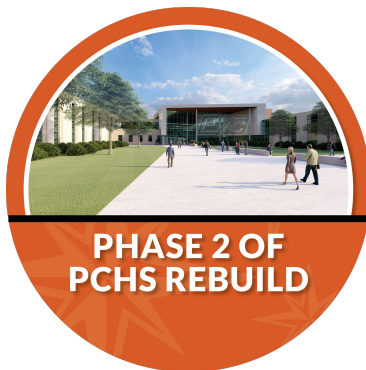
2025 Bond Project Design

November 2024





POTENTIAL PROJECTS



Compass Parking Expansion

- » Increase parking from 114 to 202 total stalls
- » Improve traffic flow for arrival and dismissal



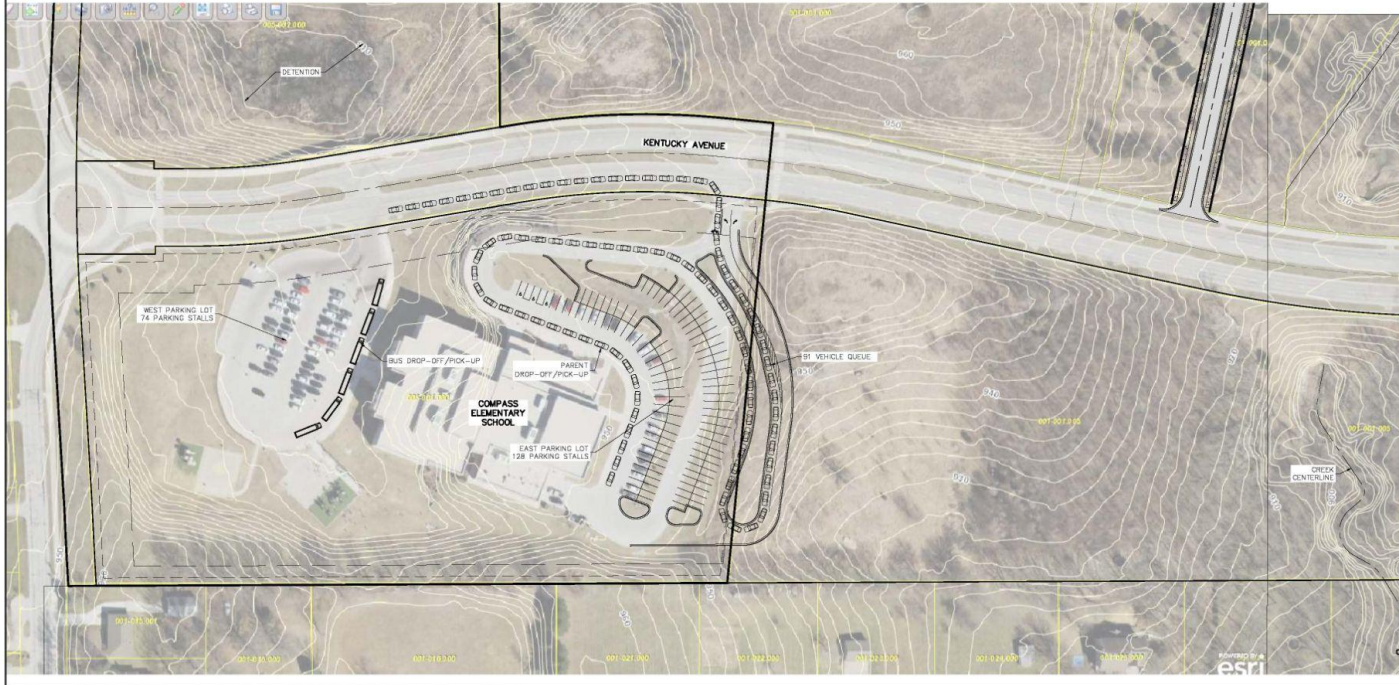
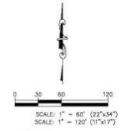
COMPASS ELEMENTARY SCHOOL TRAFFIC CIRCULATION AND IMPROVEMENT PLAN CONCEPT B PLATTE CITY, MISSOURI 64079

PREPARED FOR:
PLATTE COUNTY SCHOOL DISTRICT
308 PLATTE FALLS ROAD
PLATTE CITY, MISSOURI 64079
PHONE: (816) 868-8420
CONTACT: JAY HARRIS
EMAIL: harris@plattco.k12.mo.us

PREPARED BY:
KAW VALLEY ENGINEERING, INC.
14700 W 174th STREET
LENEXA, KANSAS 66215
PHONE: (913) 894-9155
CONTACT: DAVID WOOD
EMAIL: wood@kveeng.com

PARKING SUMMARY:
WEST LOT:
EXISTING/PROPOSED: 74 PARKING STALLS
EAST LOT:
EXISTING: 40 PARKING STALLS
PROPOSED: 128 PARKING STALLS
TOTAL:
EXISTING: 114 PARKING STALLS
PROPOSED: 202 PARKING STALLS

PARENT PICK-UP/DROP-OFF
 BUS PICKUP/DROP-OFF



KAW VALLEY ENGINEERING, INC. IS AUTHORIZED TO OPERATE ENGINEERING
 EXERCISE 1727271
KAW VALLEY ENGINEERING
 INC. (816) 894-9155
 LOCAL OFFICES: LENEXA, MISSOURI 66215
 AND PLATTE CITY, MISSOURI 64079
 www.kawvalley.com | www.kawvalley.com

COMPASS ES
 401 KENTUCKY AVE
 PLATTE CITY, MISSOURI 64079
 TRAFFIC CIRCULATION AND
 IMPROVEMENT PLAN CONCEPT B

REVISION: C19_0452
 PREPARED BY: N.M.
 DATE: 06/20/24
 SHEET: COMPASS BASE 2
 OF 3

REV	DATE	DESCRIPTION

DSN: [blank] CHK: [blank]

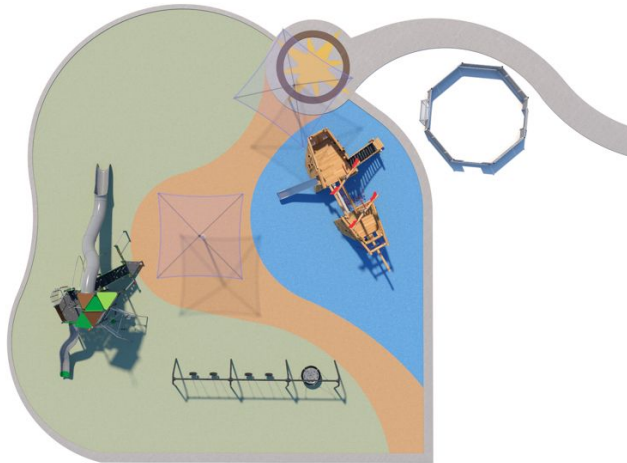
THIS DRAWING SHALL NOT BE UTILIZED BY ANY PERSON, FIRM, OR CORPORATION IN WHOLE OR IN PART WITHOUT THE SPECIFIC PERMISSION OF KAW VALLEY ENGINEERING, INC.

Improvements to Barry/Pathfinder

- » New Playground At Pathfinder Site (*2025 Bond*)
- » Remodel Existing Playground (*Summer 2026/Capital Outlay*)







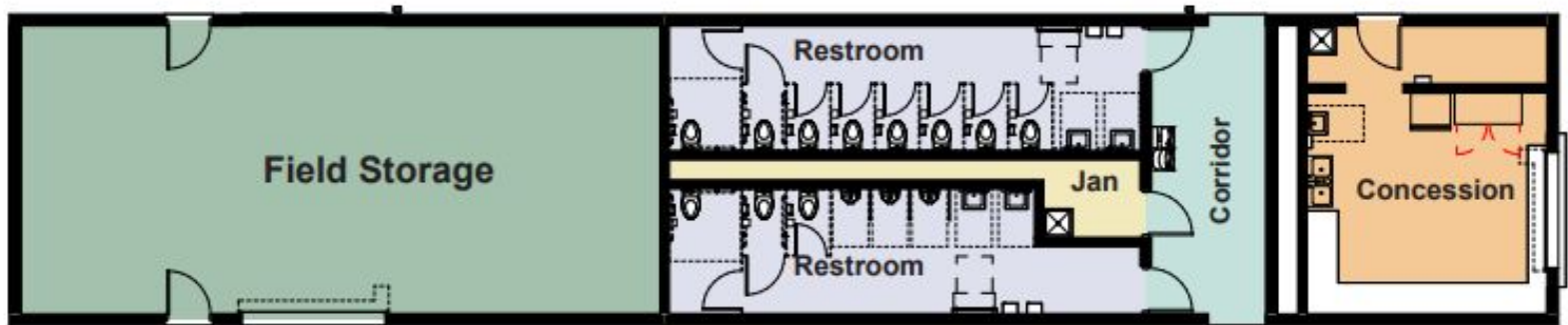
Platte Purchase Site Amenities

- » Construction of concession, restroom, and storage for Platte Purchase Activities Complex



**PLATTE PURCHASE
SITE AMENITIES**





11.14.2024

Pirate Athletic Complex / Field Building Platte Purchase Middle School



hollis + miller
architects



PCHS REBUILD PHASE TWO

» **Facility Design** (115,000 SF)

- Two-story classroom wing (50 classrooms including FACS, marketing, business, PLTW engineering + standard)
- Media Center
- Performing Arts wing (expanded art, band, and vocal rooms, black box theater, and public-facing auditorium entry)
- Administrative areas and secured entry
- Additional parking, Pirate Stadium concessions/restrooms
- Improvements to vehicular and pedestrian traffic





THE WILSON CENTER
FOR THE PERFORMING ARTS

WILSON CENTER
FOR THE PERFORMING ARTS



PORTRAIT OF A GRADUATE



PIRATE NATION



THE WILSON CENTER FOR THE PERFORMING ARTS





PIRATES
UNITED BY PRIDE
DRIVEN BY PURPOSE

PIRATES

Man in dark sweater and khaki pants looking at a smartphone.

Person standing near a large window display.

Woman in pink top and blue jeans standing in the center of the lounge.

Two small, round, dark tables with white cylindrical bases.

Person sitting on a white cylindrical ottoman.

Man in a dark blue sweater sitting on a wooden bench.

Person in a striped shirt sitting on a wooden bench.



CHS

PIRATES
UNITED PRIDE.
GIVEN BY PURPOSE.

PIRATES



PIRATES





FINE ARTS

A

$|F(u, v)|$

ARTS CENTER

BOX

THE BOOK BOON





CROW'S NEST

PIRATES
UNIVERSITY
COLLEGE
WARRINGTON

PIRATE
NEWS

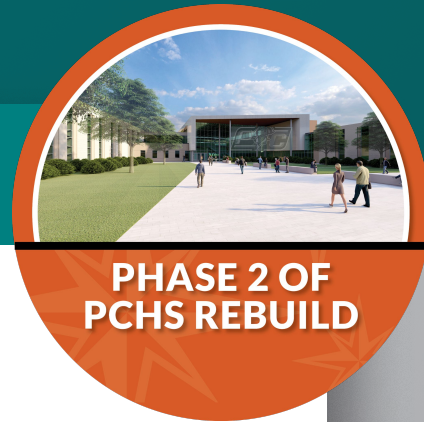




PIRATE
NEWS



Phase Two Logistics



**PHASE 2 OF
PCHS REBUILD**

» April-May

- PCHS staff begins packing rooms for relocation of rooms
 - Boxes will be provided
 - All classrooms will be moved during the week of May 26th

» June

- Demo begins of south classrooms, administration area, band, and vocal

» August 2025 - December 2026

- PCHS operates out of Phase one, North end of PCHS, and Paxton

» January 2027 (Winter Break Move)

- Move into Phase two of PCHS

» January 2027 - August 2027

- Demo North end of PCHS and construct new parking lot, Pirate Stadium concessions/restrooms and entryway

THANK
YOU

